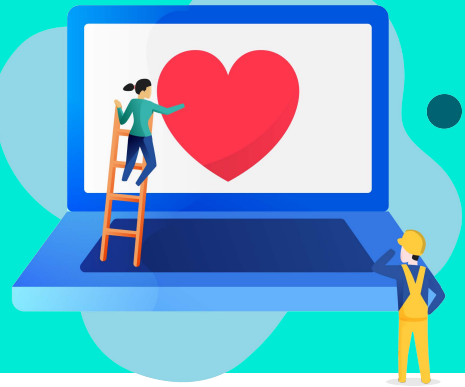


How to create a personal account



It couldn't be easier!

When first accessing CareNow, exploring the Perks tab or saving the results of an Assessment, you may be prompted to create a personal user account. The personal account must be created in the web app.

How it works step-by-step

Simply click on **"Create your account"** and then enter your details on the Registration page. Once completed, you will enjoy a personalized experience on the LifeWorks platform, including **Wellbeing Assessments** and **CareNow** programs. Please note that only you will have access to your personal information and other sensitive information.

What's next?

After you create the personal account, just log onto the platform via login.lifeworks.com using your new credentials. You may access the above features through either the web or mobile app, whichever you prefer:

- **Web app:** Click on "Wellbeing" from the top navigation and scroll down to the CareNow section. Select the appropriate program for you and follow the steps.
- **Mobile app:** Click on "Wellbeing" from the top navigation and scroll down to the CareNow section. Select the appropriate program for you and follow the steps.

Download the LifeWorks app today!

1. Download the free app on Android or iOS – simply search for "LifeWorks".



2. Open the app, click on 'Log in' and enter your shared log-in credentials

Username:

Password: